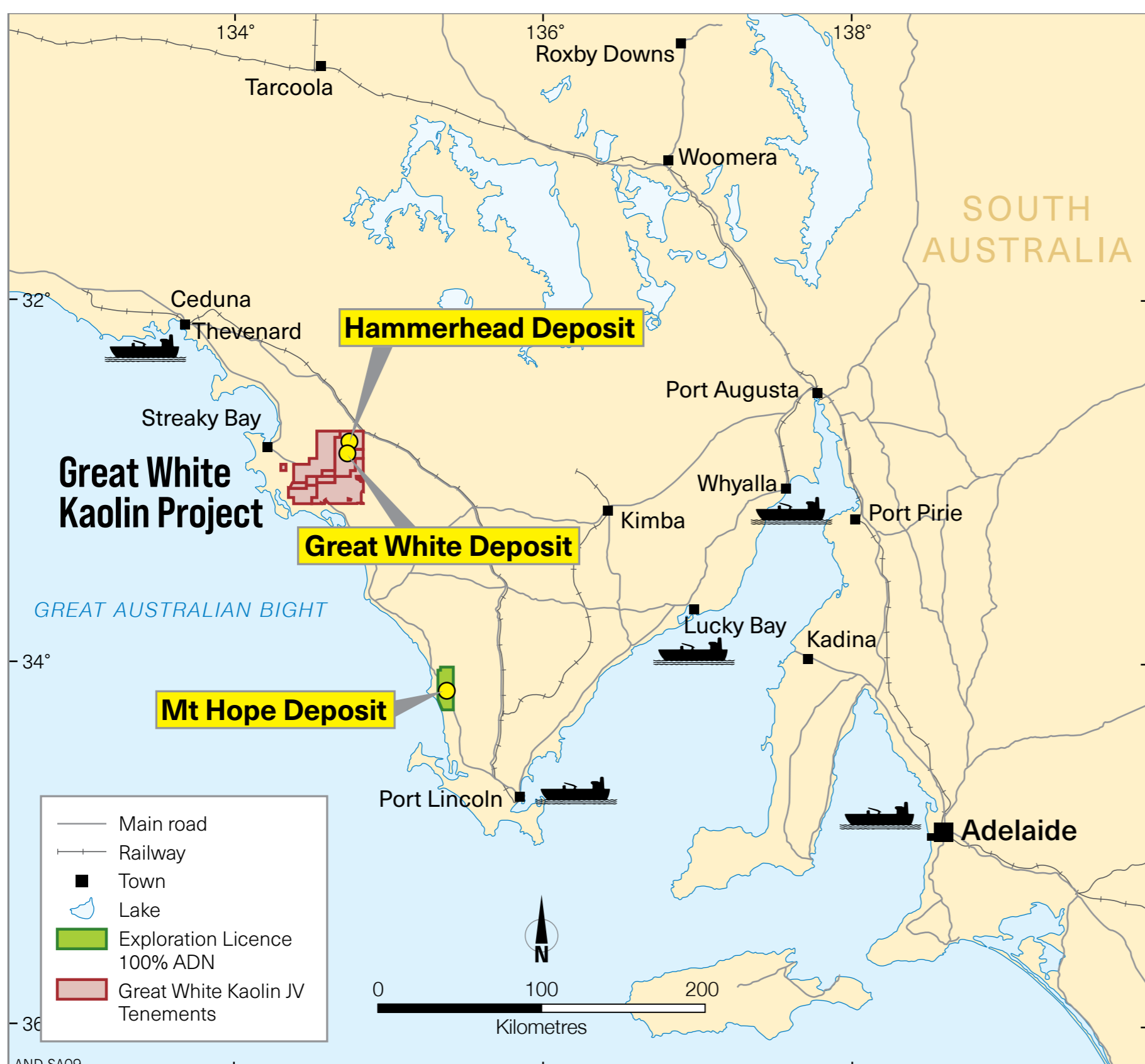


# GREAT WHITE KAOLIN PROJECT PROJECT OVERVIEW

Andromeda Metals is an emerging industrial minerals company that has been exploring the Eyre Peninsula since 1996.

The Great White Kaolin Project is a Joint Venture between Andromeda Metals Ltd and Minotaur Exploration Ltd. The Mining Proposal and Mining Lease Application will be submitted in the names of Andromeda subsidiary, Andromeda Industrial Minerals Pty Ltd and Minotaur subsidiary, Great Southern Kaolin Pty Ltd.

The Great White Kaolin Project is located 50 km east of Streaky Bay, on the Poochera – Port Kenny Rd, and includes the Great White Deposit and Hammerhead Deposit.



Great White Kaolin Project location.

The Proposed Development involves geological exploration for mineralisation, mining, processing, returning the over-burden and sand into the mine, and transport of kaolin to the end user.

The Proposed Development and its Mining Proposal includes the necessary project and environmental information, including risk and impact assessment for:

- A Mining Lease (ML) for the mine, processing plant and supporting infrastructure
- A Miscellaneous Purposes Licence (MPL) for an access road to the ML
- An MPL for a water supply pipeline from Poochera to the ML.



Ceramics sample with kaolin.

Kaolin from the Great White Deposit is a fine white clay typically composed of 50% mineral kaolinite and 50% granitic sand, derived from the weathering of granite.

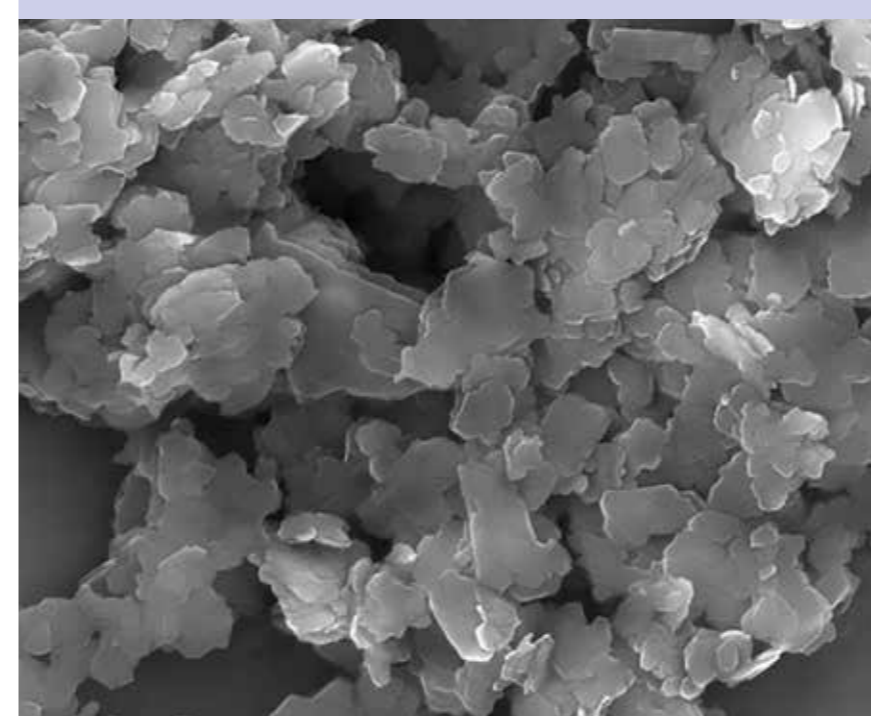
The kaolinite is present in the form of flat microscopic platelets approximately 0.003 mm thick and in a rare tubular form (nanotubes) called halloysite. Kaolinite is chemically inert and non-abrasive.



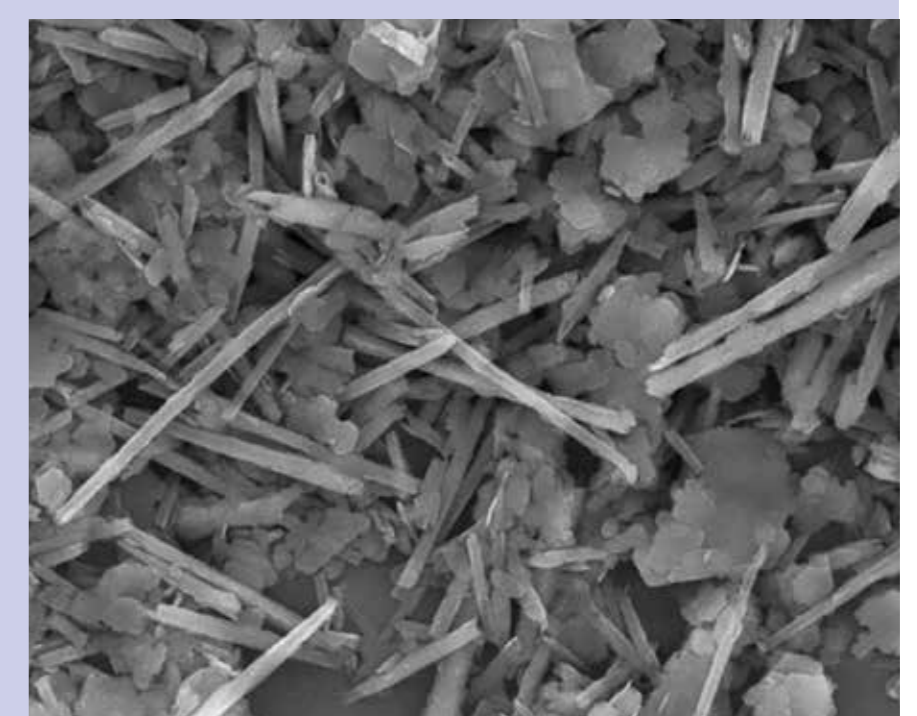
Kaolin.



Halloysite-kaolin ore stockpile.



Kaolinite microscopic platelets.



Halloysite nanotubes.

Kaolin has application in a number of industries including:

- Paper and paperboard
- Ceramics
- Fiberglass
- Paints and coatings
- Rubber and plastics
- Pharmaceuticals and medical
- Cosmetics
- Concrete
- Agriculture and horticulture.

A number of these sectors, particularly ceramics, are experiencing an increase in demand. The halloysite content of kaolin from the Great White Deposit makes it particularly desirable for ceramic applications, as halloysite increases strength and translucency of end products.

Andromeda is committed to open, transparent and engaging dialog with all communities, and is actively engaged with The Wirangu who have connection to the country associated with the Great White Kaolin Project. Andromeda acknowledges the history of both Traditional Owners and settlers in the region.